



# STONewater

PROPERTIES

4215 S. STAPLES STREET  
CORPUS CHRISTI, TX 78411



**STONewater**  
PROPERTIES

○ | 361-585-0300  
INFO@STONewaterPROPERTIES.COM

# TABLE OF CONTENTS

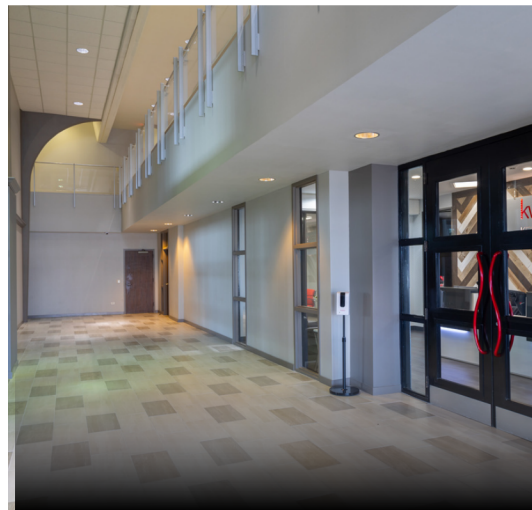
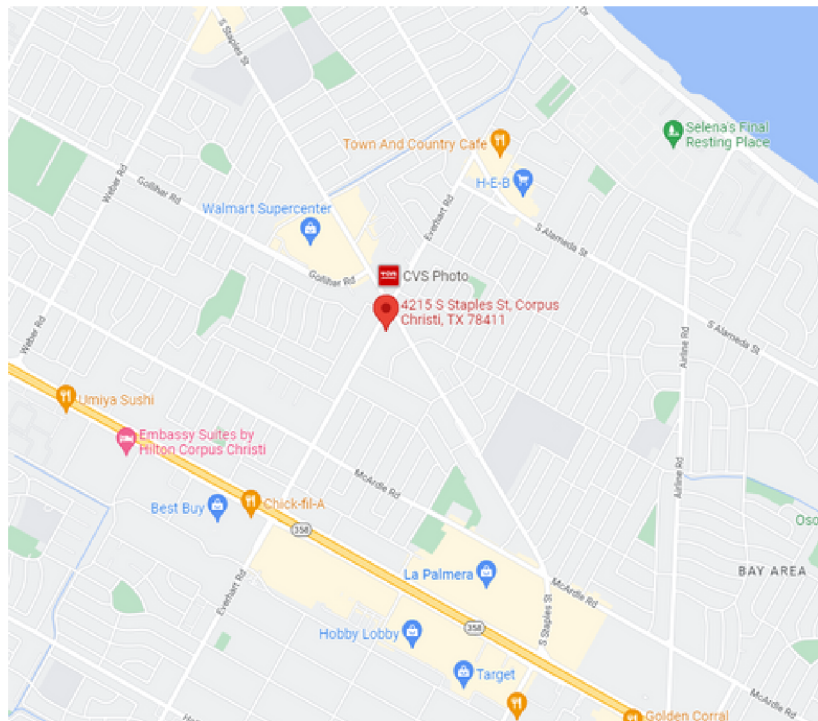
General Information	1
Leasing Availabilities	2
#100 Floor Plan	3
#102 Floor Plan	4
2nd Floor Plan	5
Photos	6-8



# 4215 S. STAPLES STREET

## General Information

Built in 1965, this iconic, mid-century local landmark is located on the corner of Staples Street and Everhart Road. This property has a secure door access card system, elevator access, and plentiful parking.



# 4 2 1 5 S . S T A P L E S S T R E E T

## Leasing Availabilities

### Lease Rate: \$14.00 NNN

#100: 11,856 SF

#102: 3,210 SF

#202: 2,118 SF

#204: 2,180 SF

#205: 5,355 SF

MOTOR BANK: 1,638 SF

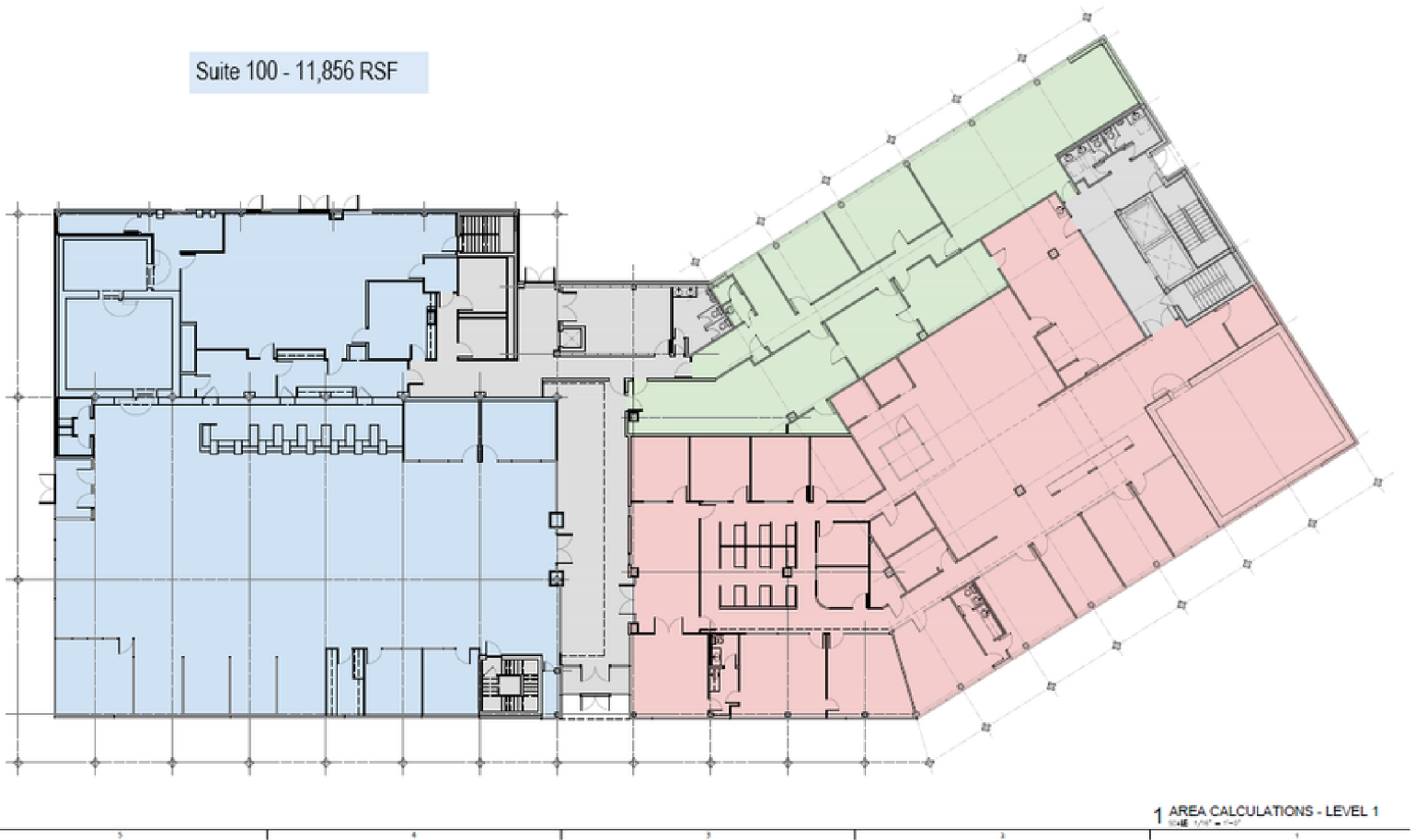
\*Call for NNN rate. 361-585-0300



# 4215 S. STAPLES STREET

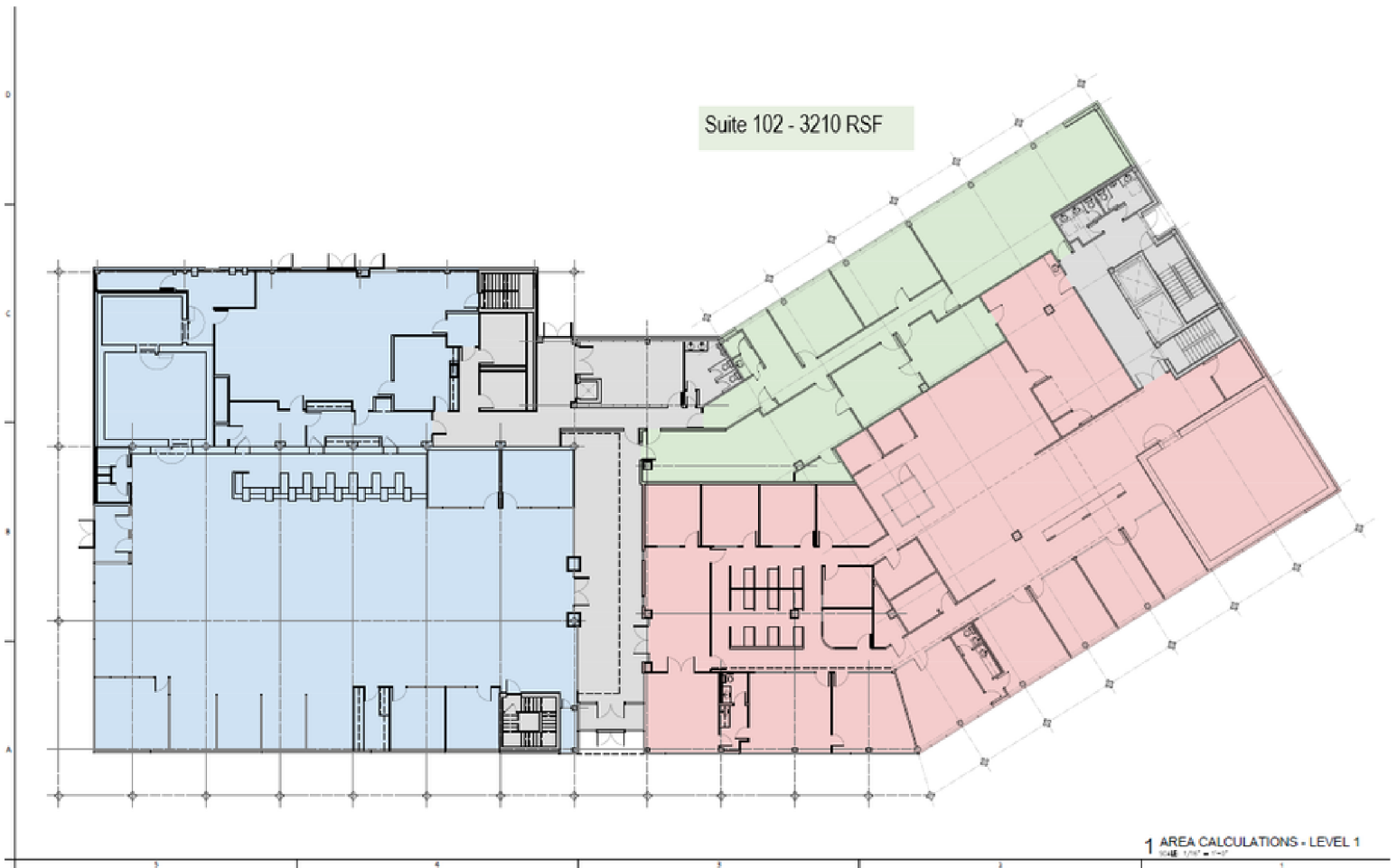
## #100 Floor Plan

Suite 100 - 11,856 RSF



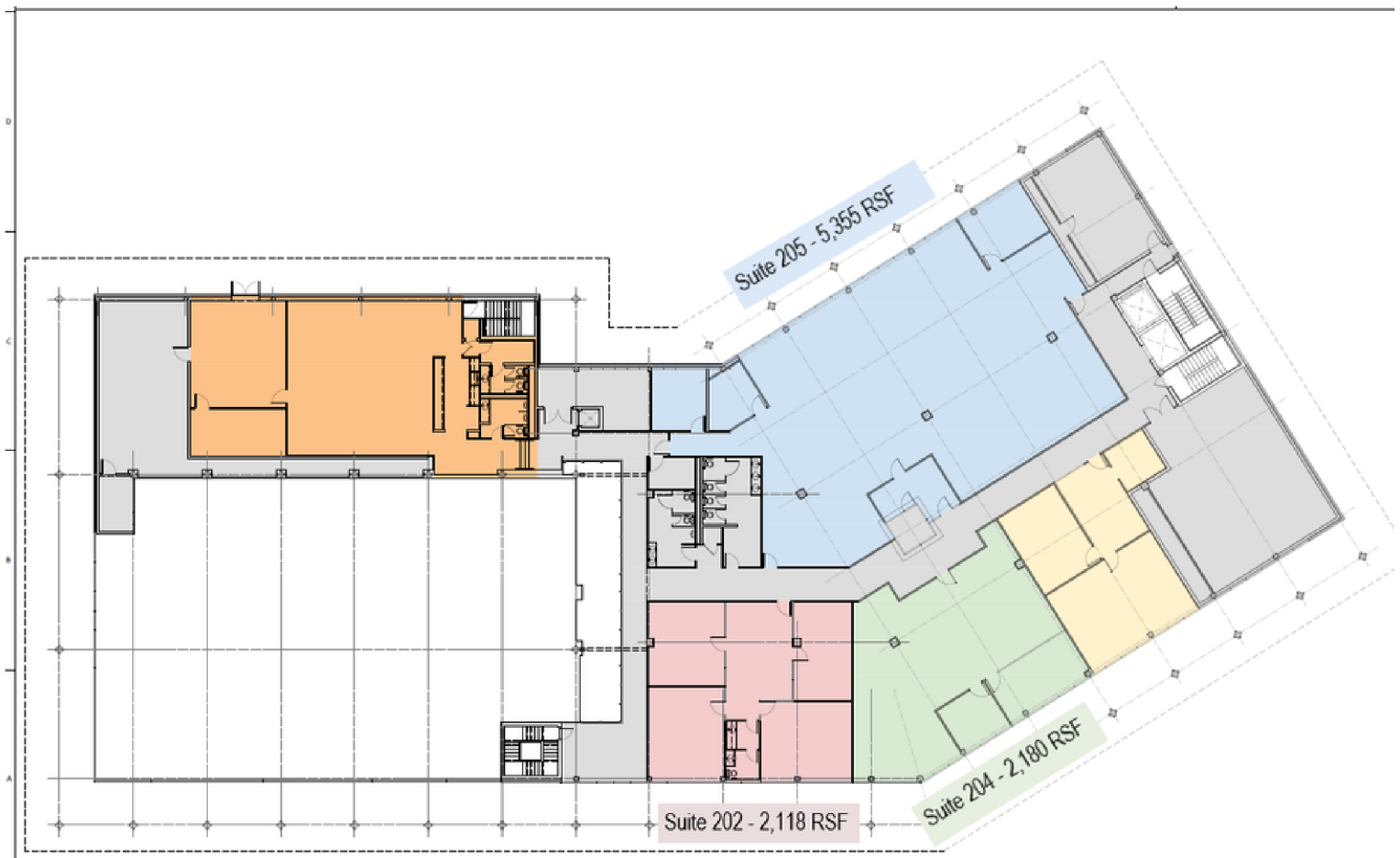
# 4215 S. STAPLES STREET

## #102 Floor Plan



# 4215 S. STAPLES STREET

## 2nd Floor Plan



# 4215 S. STAPLES STREET

## Photos





# 4215 S. STAPLES STREET

## Photos



# 4215 S. STAPLES STREET

## Photos

